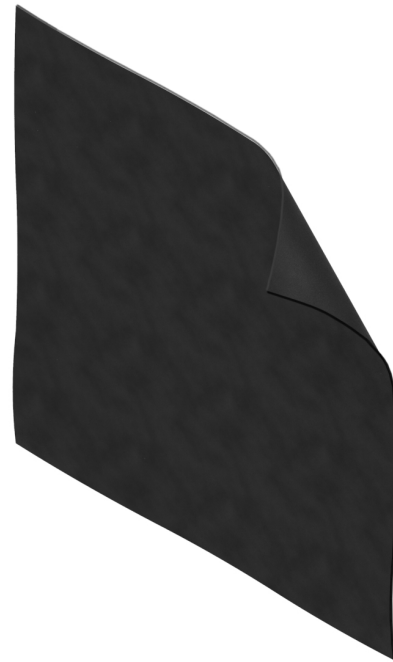


Siderise BM series barrier mat: BM0050

A thin polymeric sound barrier mat loaded with heavy mineral salts that offers exceptional flexibility and can be used in a wide variety of applications.



Application

Siderise BM series barrier mat: BM0050 is a thin, flexible polymeric sound barrier mat loaded with heavy mineral salts.

The product is used in many varied applications and industries including construction, marine, automotive, and OEM.

Some applications use the product as a component layer within a bespoke Siderise composite material. The barrier is then optionally combined with sound absorbents, spacing layers, facings and self-adhesive backings.

Common construction applications include high performance wall and partition constructions; overlays to timber intermediate floors; cladding to external ducts/pipes and for temporary screens on construction sites.

Benefits

- High acoustic performance.
- Thin and Flexible.
- Reduces 'coincidence dip'.
- Low cost unsupported option.
- Inherent fire resistance.
- Low odour.

Product description

Combining a high surface mass with 'limp' mechanical characteristics, Siderise BM series barrier mat: BM0050 offers optimum acoustic performance.

Primarily designed to improve the sound insulation value of existing panels of metal, wood, plastic, GRP, etc. It is particularly effective in reducing the effect of coincidence dip resonance found in these stiff, lightweight materials.

Additionally, Siderise BM series barrier mat: BM0050 may be used:

- On its own as a flexible void closure material; in sandwich constructions between boards.
- As a membrane in frequency selective sound absorbers.
- As an overlay treatment to materials or constructions with perforations or minor gaps resulting in potential sound leakage.

The product is robust, clean & simple to use and can be readily cut to size with a sharp knife.

Siderise BM series barrier mat: BM0050 can be used in multiple offset layers which both increases the total applied mass and negates the normal requirement for overlap joints to maintain acoustic integrity.

Installation

In general, through mechanical fixing is preferred. In vertical applications if the through fixing represents the sole means of permanent support for the material, they should be combined with load spreading washers or straps.

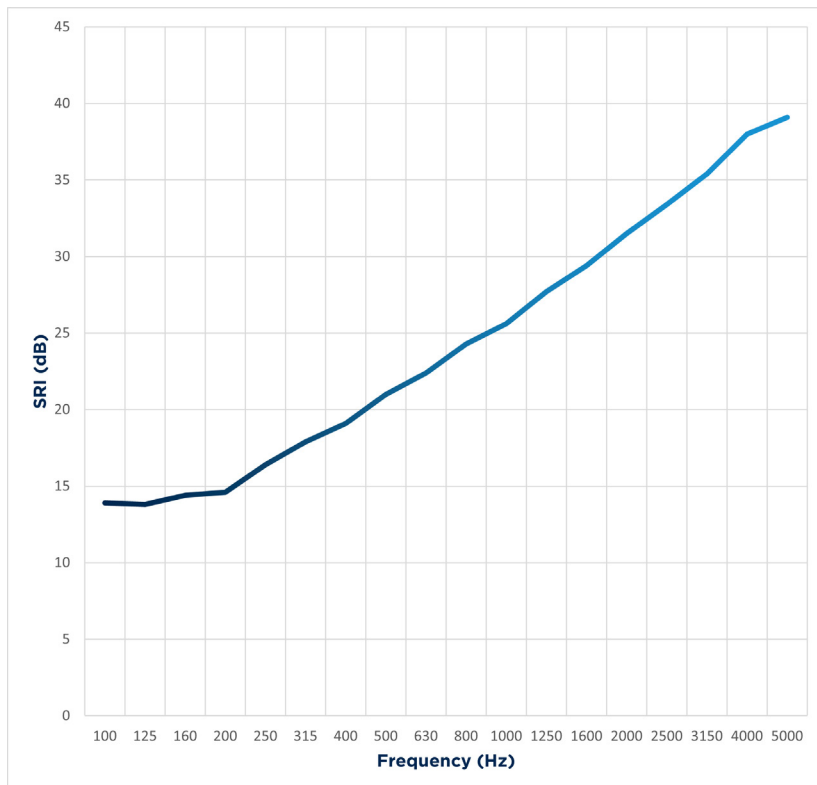
Please contact our Interiors technical team for advice on the use of adhesives.

Acoustic Performance

Mean SRI (100Hz-3150Hz) = 22 dB

$R_w = 25\text{dB}$

Our Interiors technical team are happy to advise on anticipated performance when used in conjunction with other acoustic materials.



Technical specification

Colour	Black
Surface weight	5kg/m ² ±10%
Nominal thickness	2mm (typical measured range -10% +20%)
Tensile strength	2.6MPa (typical min 1.1MPa)
Elongation at break	90% (typical min 40%)
Reaction to fire	Self-extinguishing (FMVSS302)
Continuous working temp	65°C
For short periods	Approx. 90°C

Further information

Technical support

For further information please contact our technical team at the address below.

Available CPD's

Contact Siderise for further information on our CPDs:

- Siderise Acoustic Products for Commercial Interiors -Architect Edition
- Siderise Acoustic Products and Performance with 1/3rd Octave Data – Acoustic Consultants Edition

Sales & Technical

Sales support	Technical support
Internal Sales Team	Technical Team
+44(0)1473 827695	+44(0)1473 827695
sales.sspl@siderise.com	technical.sspl@siderise.com

Siderise (Special Products) Limited

Lady Lane Industrial Estate, Hadleigh, Suffolk IP7 6BQ
United Kingdom

The information published herein is given in good faith and is believed to be accurate at the time of publication. Please check that this version is current. Siderise has a policy of continuous product improvement and reserves the right to alter or amend the specifications of products without prior notice. Siderise does not accept responsibility or the consequences of using the products and systems described outside of any given recommendations within this document or its other official documentation. Recommendations for use should be verified in regard to the suitability and compliance with actual requirements, specifications and any applicable laws, codes, and regulations. Expert advice should be sought where there is any doubt about the correct specification or installation of Siderise products and systems.